

FEATURES & BENEFITS

CONSTRUCTION

Galvanized Pipe , bronze valves, fiberglass tank and galvanized structural members, painted RAL 6029 Green provide superior defence in a highly corrosive environment.

QUALITY CONTROL

Fully tested for quick placement and on-site assembly

EYE/FACE WASH

AXION® MSR eye/face wash head uses an inverted directional laminar flow to sweep contaminants away from the vulnerable nasal cavity.

SUPERIOR SAFETY

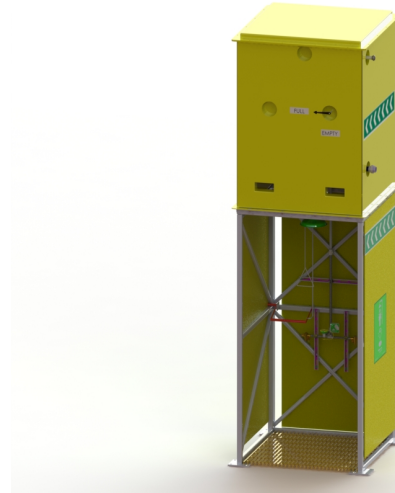
Enhanced victim comfort with AXION® eye/face wash and shower incorporating bronze valves for easy activation. Exceeds ANSI tepid water constant flow requirements (17+ min @75.7 LPM with 1,631 litre tank) with tepid water to an insulated booth that is heated to 70° F (21° C) creating a comfortable environment for the user.

OTHER AVAILABLE CONFIGURATIONS

Flow Switch – Hazardous Area Zone 1 & 2 IECEx AND Non - Hazardous
Proximity Switches for Shower & Eyewash –Hazardous Area Zone 1 & 2 IECEx AND Non Hazardous
Lighting – 2 x 18W Fluro Tubes – Hazardous AND Non Hazardous area

VALVES

Eye/face wash valve is designed to make the flushing of contaminants occur with the simple push of a stainless steel flag. Shower ball valve is designed to make the flushing of fluid occur with the pull of a triangular lever. Both are made of bronze.



SPECIFICATIONS

Model 8770 shower and eyewash shall include a galvanized structure with bright yellow fiberglass side panels and 435 gallon (1631L) overhead tank. The emergency flushing is provided by a hydrodynamic showerhead as well as the medically acclaimed AXION® MSR eyewash. This system is designed to operate with a number of electrical options. Emergency flushing is provided by a patented flow control into a hydrodynamic drench shower and the medically superior AXION MSR eye/facewash. The entire system meets AS 4775- and ANSI Z358.1 standard for emergency eyewash and shower equipment.

STANDARD FITTINGS

- ☐ Galvanised Steel Frame, Sch 40 , Painted RAL 6029 Green.
- ☐ 4 x 203mm x 203 mm x 6mm Mounting Plates.
- ☐ 4 x 11/16 Diameter Mounting Holes per Plate.
- ☐ Fork Liftable 1600 Litre Capacity Insulated Water Tank
- ☐ Shower Operation by Push Bar or Pull Handle
- ☐ Shower Test Handle.
- ☐ Walk On Foot Grate.
- ☐ Visual Water Level Indicator.
- ☐ Water Temperature Gauge.
- ☐ In-Line Mesh Strainer for Eye-Facewash.
- ☐ Fibreglass Yellow Water Tank.
- ☐ Fibre glass Yellow Side Panels-
- ☐ Scald Protection Valve
- ☐ Mariotte Syphon Valve to Maintain Consistent Water Flow.
- ☐ 40mm Water Connection

APPLICATIONS

Perfect for mining, Petro-Chemical, bio-diesel, and ethanol processing facilities as well any other remote outdoor location without a potable water supply where a drench shower and eyewash are required.

CERTIFICATION COMPLIANCE

AUSTRALIAN DESIGNED

for AUSTRALIAN CONDITIONS to AS 4775-2007

Wind Loading : AS1170.2-2011 88 m/s Cyclonic Wind Speed, Region D, Importance Level 4.

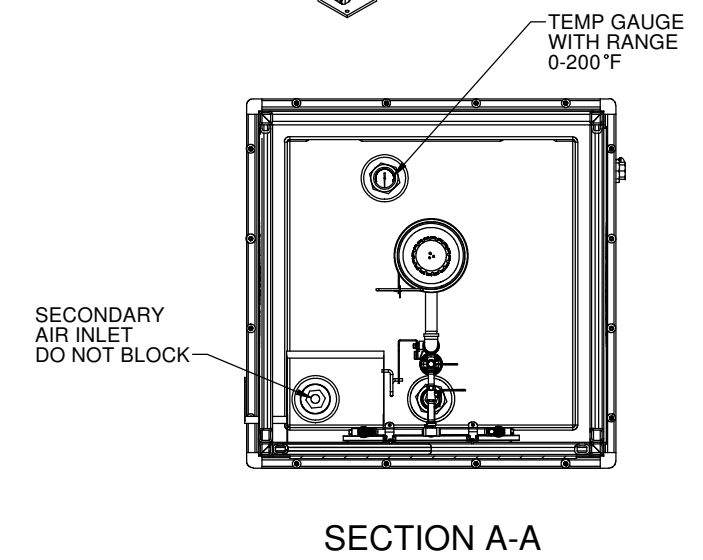
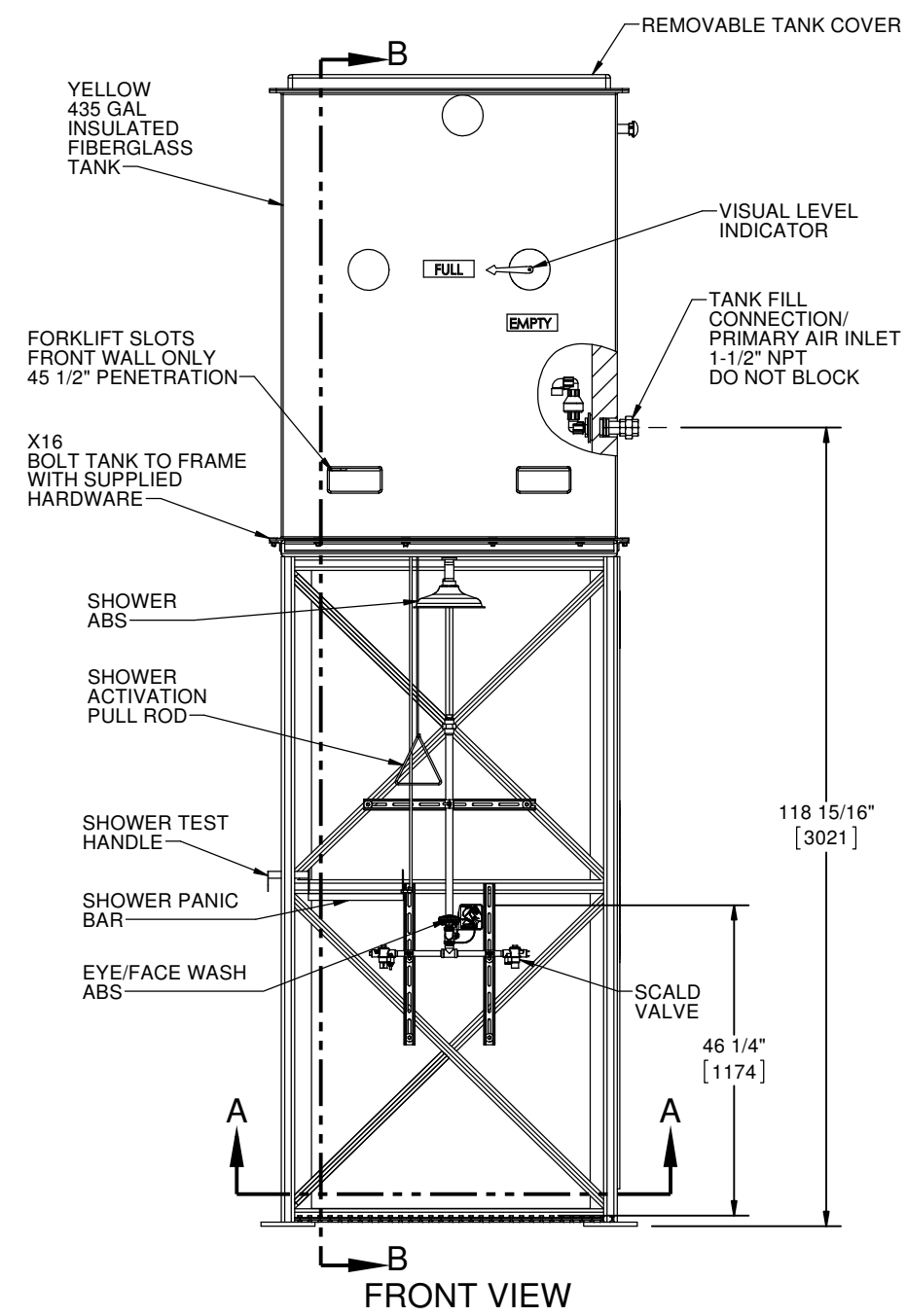
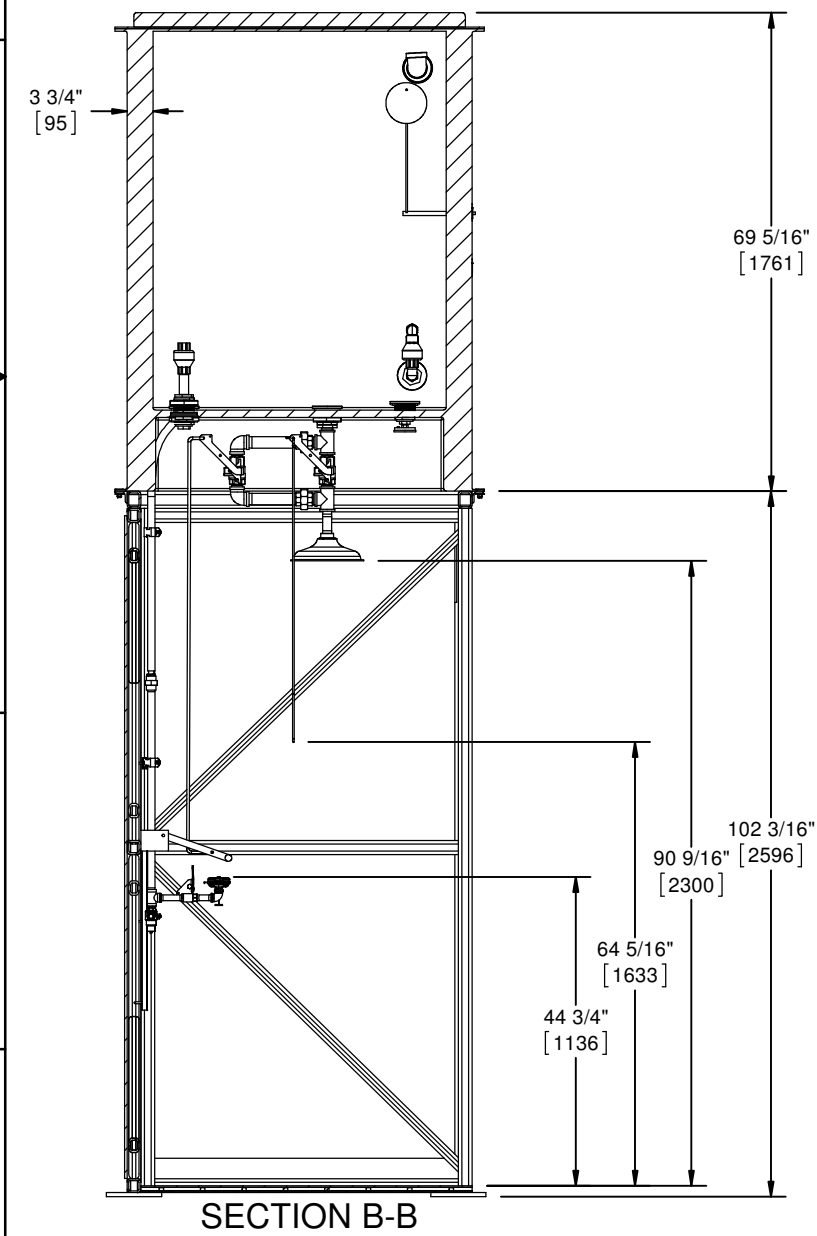
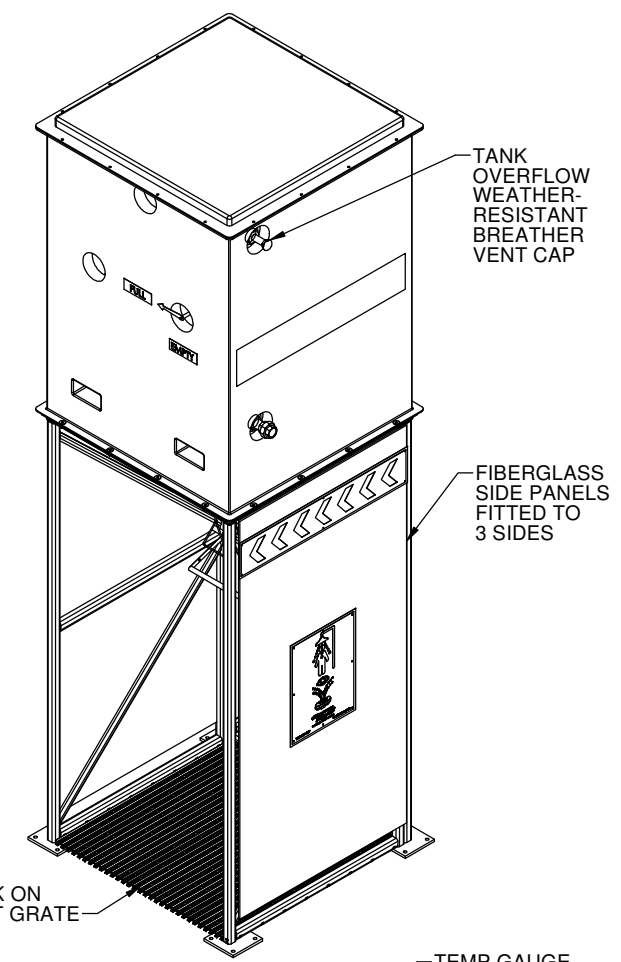
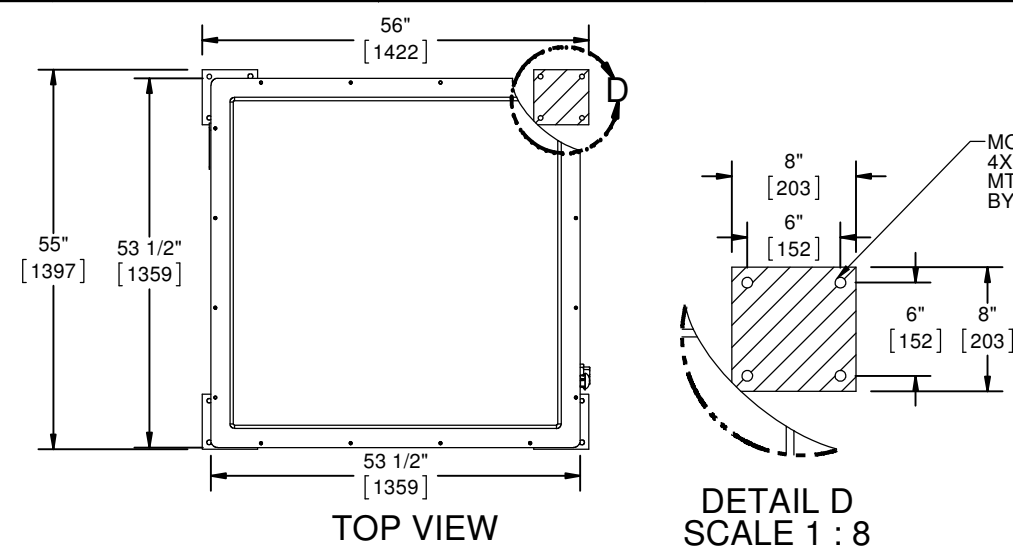
Siesmic Design : AS1170.4-2007. Cat D

For more information, visit www.allvalve.com.au or call +61 2 8543 9811

NOTES:

1. DIMENSIONS: INCHES [mm].
2. ALL TOLERANCES: $\pm 1/2"$
3. AREA CLASSIFICATION: NO ELECTRICAL DEVICES INCLUDED. UNIT SUITABLE FOR ALL ELECTRICAL AREA CLASSIFICATIONS
4. MATERIAL:
TANK/PANELS: FIBERGLASS
FRAME: CORROSION PROTECTED STEEL, PAINTED TO RAL 6029 GREEN
PIPE: GALVANIZED STEEL, SCHEDULE 40
FITTINGS: CL150, GALVANIZED STEEL
VALVES: BRONZE
5. ESTIMATED WEIGHT:
DRY: 1552LB [704KG]
WET: 5184LB [2351KG]
6. AMBIENT TEMPERATURE: ABOVE FREEZING, BELOW 100F
7. UNIT COMPLIES TO ANSI Z358.1 -2014.
8. FLOW REGULATION AND CONTROL WITH TANK SIPHON.
9. UNIT SHIPS WITH TANK AND SUPPORT SEPERATE AND DISASSEMBLED. ASSEMBLE WITH PROVIDED HARDWARE AND ANCHOR USING MANUFACTURER PROVIDED MOUNTING POINTS.

REVISIONS				
REV	DESCRIPTION	ECN	DATE	BY
1	INITIAL RELEASE		9/28/2016	OYV



BILL OF MATERIAL				
CUSTOMER INFO/TAG #: AUSTRALIA ALL-VALVE		1455 KLEPPE LANE SPARKS, NEVADA 89431 USA		
JOB NUMBER:	2194-109323	TITLE INDOOR/OUTDOOR OVERHEAD TANK SHOWER WITH EYEWASH		
DRAWN BY:	OYV	THIRD ANGLE PROJECTION		
DRAWN DATE:	09/29/2016	NOTICE OF PROPRIETARY INFORMATION INFORMATION CONTAINED HEREIN IS THE SOLE PROPERTY OF HAWS CORPORATION AND THIS DOCUMENT AND THE DATA DISCLOSED HEREIN OR HEREWITH IS NOT TO BE REPRODUCED, USED, OR DISCLOSED IN WHOLE OR IN PART TO ANYONE WITHOUT THE PERMISSION OF HAWS CORPORATION.		
CHECKED BY:		SHOP SH 1 OF 1		
CHECKED DATE:		SCALE SIZE PART NO. 8770.25		
APPROVED BY:		REV. 1		
APPROVAL DATE:				