



ENGINEERED SOLUTIONS® FOR SAFETY

**GRAVITY-FED INDOOR SHOWER/EYEWASH
MODEL 8770.25
INSTALLATION, OPERATION AND
MAINTENANCE MANUAL**

**FOR:
All-Valve Australia
P.O. # 17064
S.O. # 1652315
W.O. # 2194-109323**

THIS PAGE INTENTIONALLY BLANK
FOR PRINTING PURPOSES

Table of Contents

1. DESCRIPTION OF PRODUCT.....	3
2. CONNECTION SCHEDULE	7
3. INSTALLATION INSTRUCTIONS	9
4. SEQUENCE OF OPERATIONS	15
5. MAINTENANCE, TESTING AND REPAIR	17
a. Tank.....	17
b. Combination Shower/Eyewash	17
6. TROUBLESHOOTING	19
7. SPARE PARTS	21
8. DRAWINGS.....	23
a. Installation Drawing (2194-109323-GA)	25
b. Piping and Instrumentation Diagram (2194-109323-PID).....	26
9. WARRANTY.....	27
a. Haws Emergency Equipment Limited Warranty	29

THIS PAGE INTENTIONALLY BLANK
FOR PRINTING PURPOSES

1. DESCRIPTION OF PRODUCT

Haws Corporation model 8770.25 Haws Integrated booth is a foam-insulated, fiberglass encapsulated tank and powder coated 4-piece frame. Large green graphics identify the unit as an emergency shower eyewash station and assist in guiding the user to the entrance.

The 8770 unit includes a Haws combination shower and eyewash.

The water is stored in a 1,631 litre storage tank with galvanized steel plumbing and bronze ball valves. A level indicator is included with the unit to indicate the water capacity. When the unit is filled, the arrow will point to the "FULL" marking and when the tank is depleted the arrow points to "EMPTY" marking.

Estimated Weight of this unit: 1600 lbs. (750 kg) dry; 5200 lbs. (2400 kg) in service.

THIS PAGE INTENTIONALLY BLANK
FOR PRINTING PURPOSES

2. CONNECTION SCHEDULE

1. Water connection at supply inlet is 40mm BSP Union.

Maximum utility consumption: An external source of potable water is required for filling only. Required filling volume is 1,631 litres.

THIS PAGE INTENTIONALLY BLANK
FOR PRINTING PURPOSES

3. INSTALLATION INSTRUCTIONS

- a. A forklift capable of lifting 2,268 kg should transport the bottom shower unit from truck to site. The shower unit should be lifted from center of pallet, and when transporting, kept low to the ground.
- b. Once off the truck, the shower unit should be situated on a level site. The frame has plates for anchoring the booth to the floor. Anchor with 16mm minimum anchor bolts through the floor mounting plates.

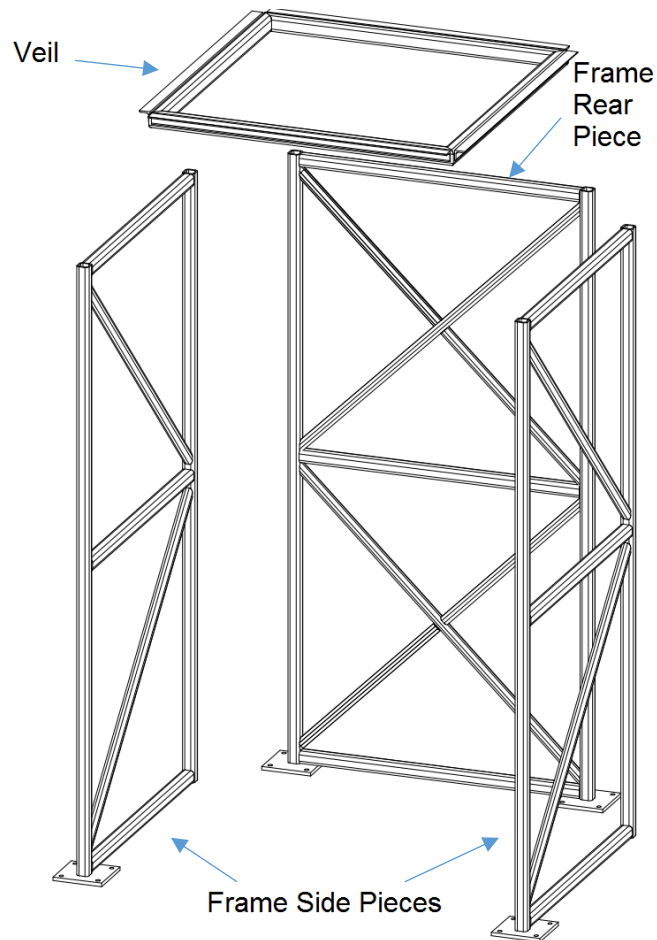


Figure 1: Model identifying 4 components of 4-piece frame.

- c. If the shower booth is to be placed over a drain, the drain should be able to handle a flow of 131 LPM. Otherwise, the floor should allow the water to drain out the sides and away from the unit.
- d. Identify the rear, left, and right side of shower frame, see Figure 1. Position them so that the side frame studded threads slide through each of the rear frame brackets (the emergency shower sign and chevrons on panel will face the outside of the unit), and secure them with 15mm washers and nuts provided, one of each per studded thread, as shown in Figure 2. Floor mounting holes, each 17.5mm in diameter, are provided to accommodate hardware to mount the unit to the floor – hardware not provided by Haws.



Figure 2: Right and rear frame sides aligned and secured.

- e. Before lifting tank and connecting to frame, secure tank veil underneath with supplied 9.5mm hardware (16 pcs) around flange of tank, see Figure 3. Because of shifting and movement in transport, hardware can loosen in shipping. Torque nuts connecting tank to veil underneath to 42NM.

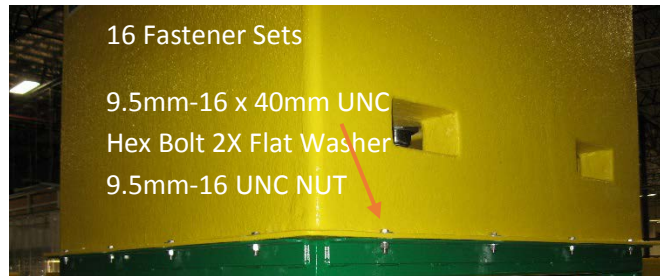


Figure 3: Hardware around rim of tank securing veil.

TANK INSTALLATION:

- f. With the veil and tank secured, lift the tank with the provided fork slots above the shower frame and lower so the edges of the frame and tank align. Arrows on the side of the tank should point to the entrance of the frame. Remove pre-assembled bracketing and use care to ensure the shower head and frame veil do not get damaged as the tank is lowered onto the frame and the studded threads are aligned on veil and each of the frame sides. Affix veil and tank assembly to frame sides with bracketing, and fasten with 1 qty. 15mm washer and nut per stud, as seen in Figure 4.



Figure 4: Veil and frame side attached with bracketing and provided hardware.

- g. Connect eyewash supply tubing to the tank barb fitting directly above as seen in Figure 5.



Figure 4: Flexible eyewash tubing connected to tank.

HANDLE INSTALLATION:

- h. To install the test handle/panic bar, see Figure 5.
- 1) Guide the rubber tipped handle through the hole in the left panel by the red bracketing.
 - 2) Align 9.5mm washers on both sides of frame mount bracket closest to wall before sliding threaded stud from test handle through brackets and tightening on 9.5mm nylon locknut.
 - 3) Insert 9.5mm bolt provided through frame mounting bracket with washers on both sides and through handle. Place washer on end of bolt after handle before tightening the assembly with nylon locknut.
 - 4) Attach Shower activation rod through hole in handle (a retaining ring was pre-installed to avoid the rod slipping around bend). Place rod through lower hole on valve handle, as seen Figure 6. Install by sliding retaining rings provided to about activation rod shaft to hold in place (Figure 7).

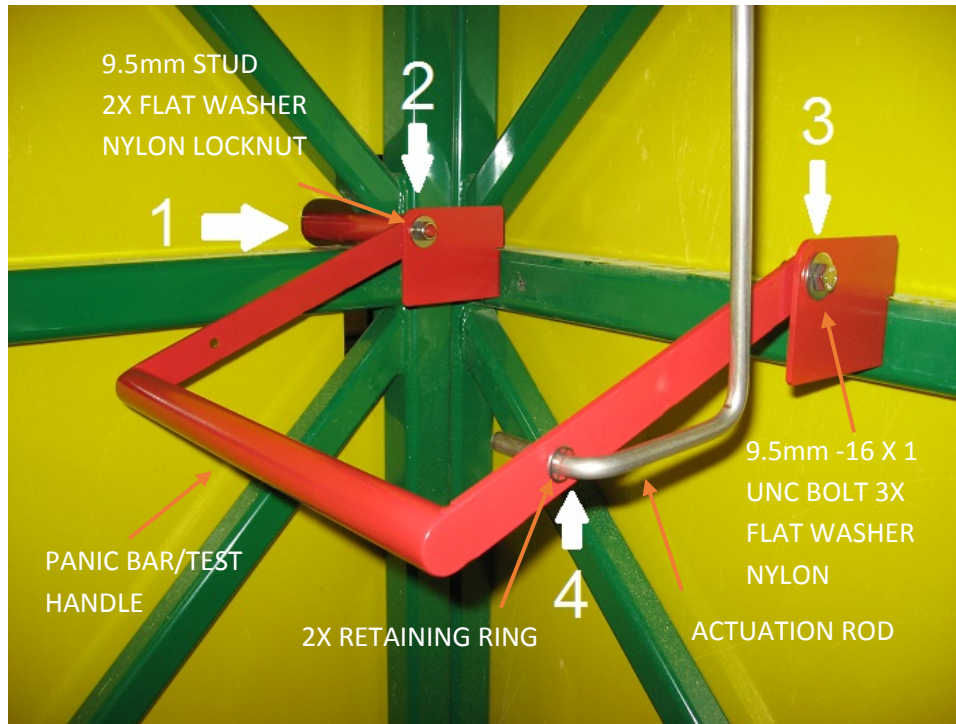


Figure 5: Test Bar installation, indicated per step.



Figure 6: Activation rod placed through lower hole on valve handle for appropriate bar clearance.

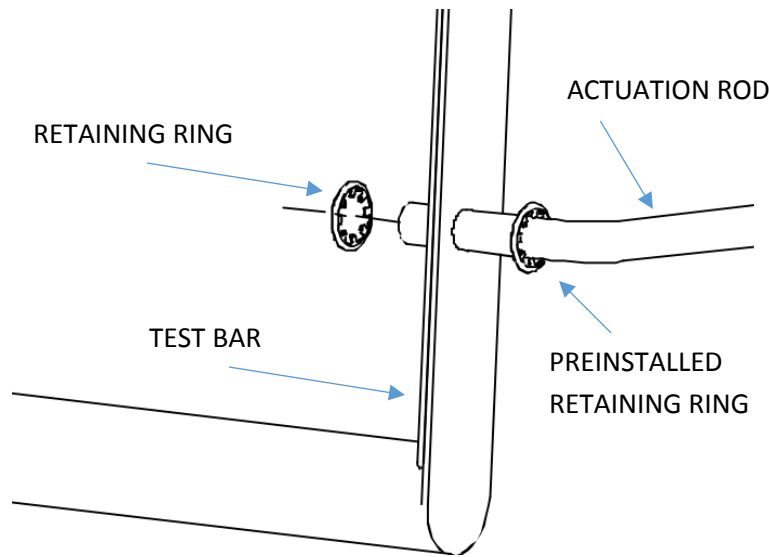


Figure 7: Installation of retaining ring on activation rod.

SUPPLY CONNECTION:

- i. The unit requires an external potable water source to fill the tank. The supply line is a 40mm BSP union connection. Before connection, the supply line should be inspected or run for a few minutes to purge any debris, thereby preventing foreign matter from entering the equipment. Fill the tank until the level indicator points to "FULL." Should the unit become overfilled, water will exit at the overflow connection near the top of the tank. This will stop once correct level is reached.
- j. Once water storage tank is full, inspect plumbing for leaks and repair as necessary. During transit, some plumbing may have vibrated loose, which would allow water to leak from the piping. Once the plumbing has been checked the shower should be run for several minutes to evacuate any debris that might have entered the booth during transit to the site. After debris evacuation, make sure to refill the tank until the arrow indicator rests on "Full" so that the shower will be ready to use.
- k. After testing, refill system.

****NOTE: Once the shower is filled, the water supply MUST be disconnected from the fill port before shower operation. Failure to do so will render one of the tank siphons inoperable and may cause damage to the water tank if the shower is activated.**

4. SEQUENCE OF OPERATIONS

System Overview

This unit is a single-use 15 minute operation combination shower eyewash, without a full time water supply. Water pressure is by gravity only and not dependent on electrical power or any other means.

System Function Overview

The functions of various components in the system include: monitoring tank water level, and providing emergency shower and/or eyewash.

Actual tank temperature can be seen on the temperature gauge on the bottom of the tank.

An arrow indicator displays the status of the tank water level. This indicator is provided for low water level indication.

A push flag activates the eyewash and a pull-rod and/or panic bar/test handle activates the shower.

THIS PAGE INTENTIONALLY BLANK
FOR PRINTING PURPOSES

5. MAINTENANCE, TESTING AND REPAIR

a. Tank

The foam insulated wood tank is coated with a fiberglass shell. Should cleaning be necessary, a mixture of water with household glass cleaner or rubbing alcohol may be used. For repairs to small holes in the booth, Sikaflex 1A Construction Sealant, silicone, or a similar sealant can be used to seal openings in the tank surface. If foam is exposed, a fiberglass resin can be applied to protect it from the elements. Damaged or removed sections of wood can be replaced with “Bondo” or other shaping material.

b. Combination Shower/Eyewash

Maintenance should consist of weekly inspection or as dictated by customer standards. Water should be drained every six (6) months and filled with fresh potable water. Bacteriostatic additive should also be added based on manufacturer’s requirements.

THIS PAGE INTENTIONALLY BLANK
FOR PRINTING PURPOSES

6. TROUBLESHOOTING

PROBLEM	REPAIR CHECKLIST
Insufficient flow to eyewash.	<ul style="list-style-type: none">a) Low water level. Verify sufficient water in tank.b) Clogged flow control. Disassemble eyewash head. Clean or replace eyewash head.c) Clogged siphon. Verify water supply removed and secondary siphon not plugged.
Insufficient shower flow.	<ul style="list-style-type: none">a) Low water level. Verify sufficient water in tank.b) Clogged siphon. Verify water supply removed and secondary siphon not plugged.
Excessive shower flow	<ul style="list-style-type: none">a) Ensure siphon installed correctly in unitb) Ensure tank is seated

If there are any questions that cannot be answered here, please consult All Valve Industries on +61 2 8543 9811

THIS PAGE INTENTIONALLY BLANK
FOR PRINTING PURPOSES

7. SPARE PARTS

SPARE PART INFORMATION SHEET		
SPARE PART	QUANTITY USED	HAWS PART NUMBER
Shower Head	1	0002943181
Axion Eyewash Head	1	0002953160
Swing Check Valve 1"	1	0110000443
Swing Check Valve 2"	1	0110000568
Red Test Handle	1	0480000210
Level indicator	1	0180000564
Temp Gauge	1	0002582321.9
Actuation Rod	1	0080027972
Retaining Ring	3	0080027940

Please call All Valve Industries to order spare parts: +61 2 8543 9811

THIS PAGE INTENTIONALLY BLANK
FOR PRINTING PURPOSES

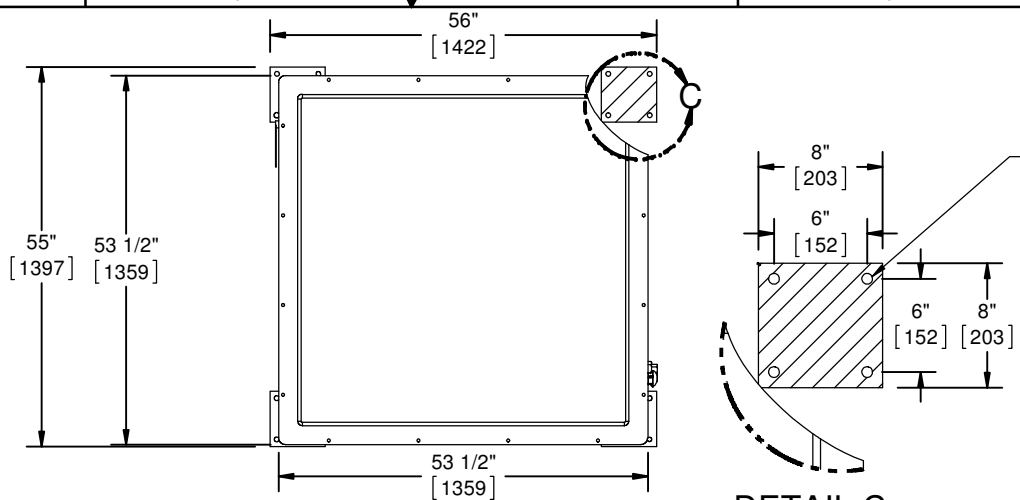
8. DRAWINGS

- a. Installation Drawing (2194-109323-GA)
- b. Piping and Instrumentation Diagram (2194-109323-PID)

THIS PAGE INTENTIONALLY BLANK
FOR PRINTING PURPOSES

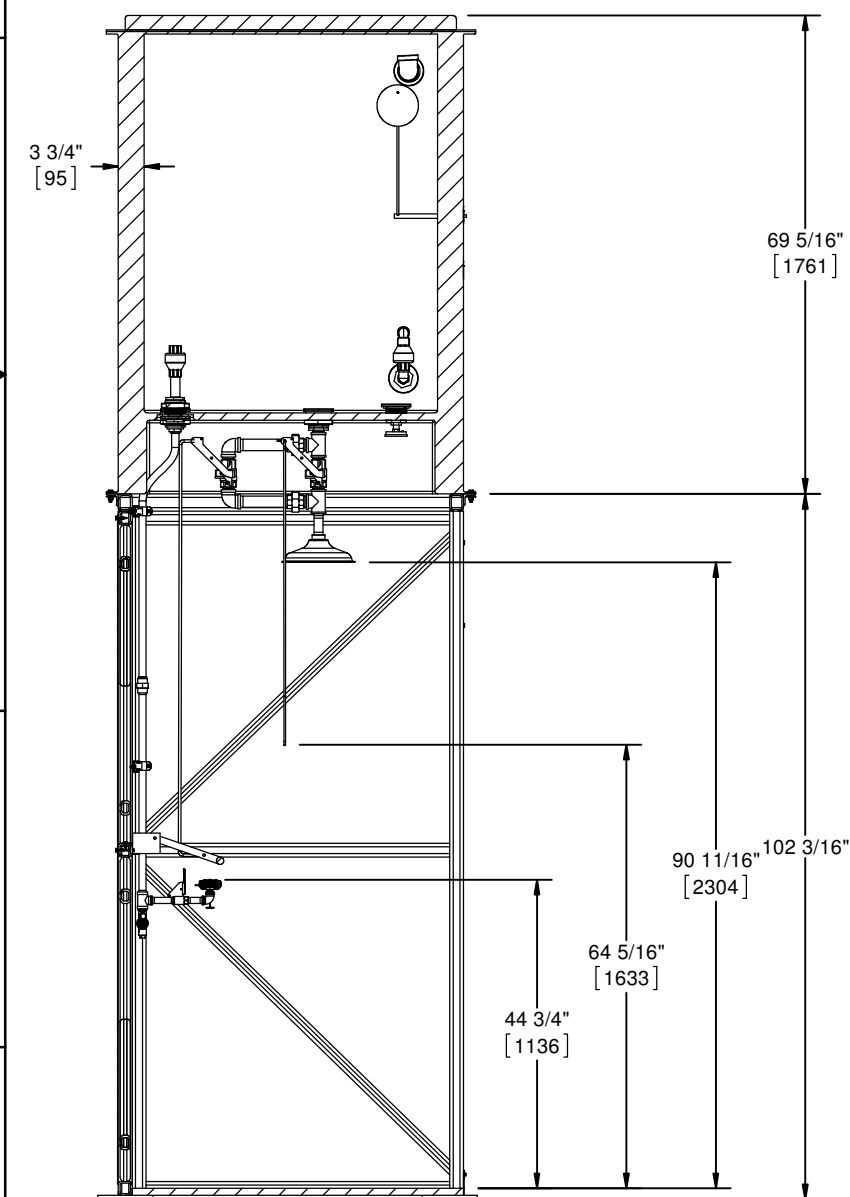
NOTES:

1. DIMENSIONS: INCHES [mm].
2. ALL TOLERANCES: $\pm 1/2"$
3. AREA CLASSIFICATION: NO ELECTRICAL DEVICES INCLUDED. UNIT SUITABLE FOR ALL ELECTRICAL AREA CLASSIFICATIONS
4. MATERIAL:
TANK/PANELS: FIBERGLASS
FRAME: CORROSION PROTECTED STEEL, PAINTED TO RAL 6029 GREEN
PIPE: GALVANIZED STEEL, SCHEDULE 40
FITTINGS: CL150, GALVANIZED STEEL
VALVES: BRONZE
5. ESTIMATED WEIGHT:
DRY: 1552LB [704KG]
WET: 5184LB [2351KG]
6. AMBIENT TEMPERATURE: ABOVE FREEZING, BELOW 100F
7. UNIT COMPLIES TO ANSI Z358.1 -2014.
8. FLOW REGULATION AND CONTROL WITH TANK SIPHON.
9. UNIT SHIPS WITH TANK AND SUPPORT SEPERATE AND DISASSEMBLED. ASSEMBLE WITH PROVIDED HARDWARE AND ANCHOR USING MANUFACTURER PROVIDED MOUNTING POINTS.

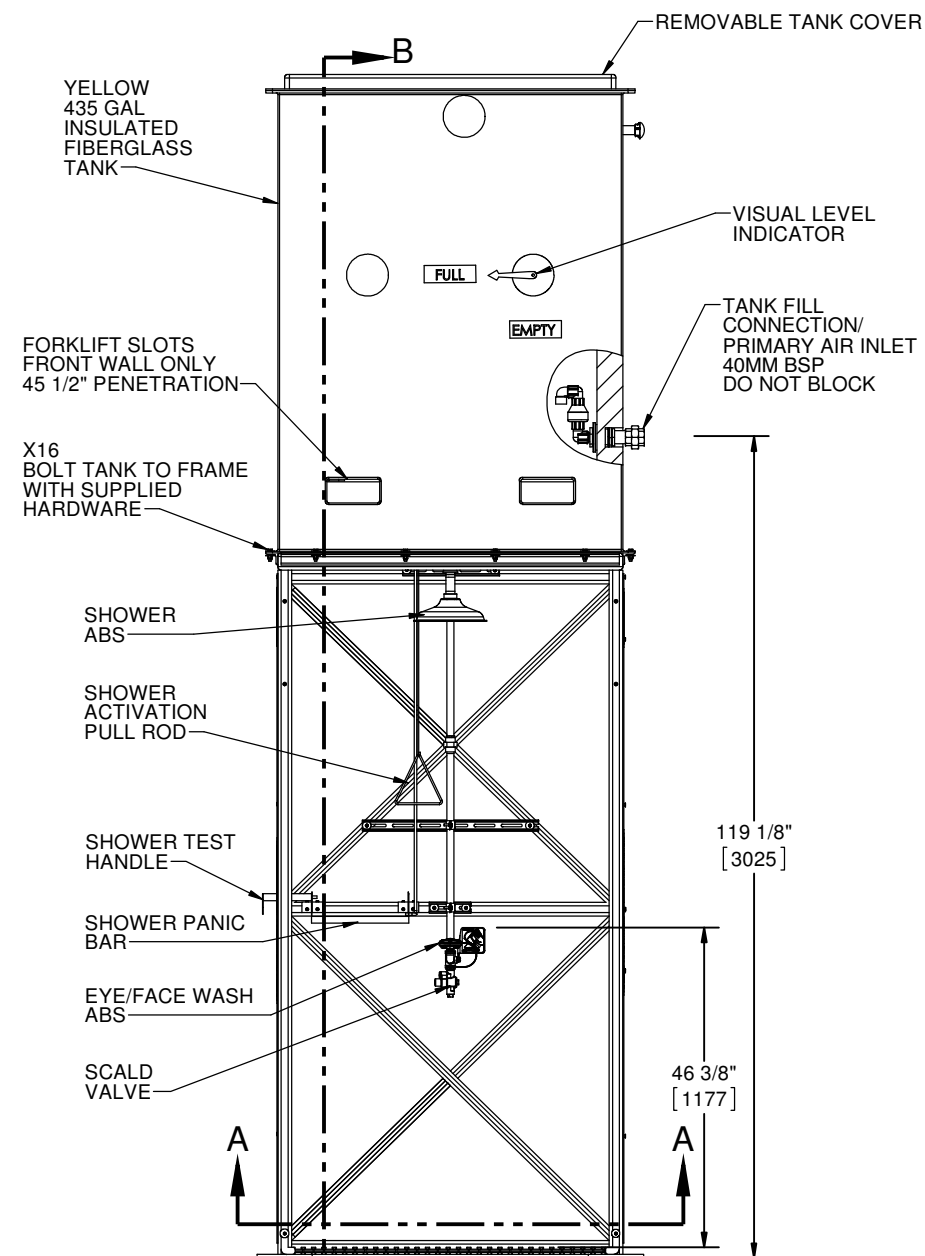


TOP VIEW

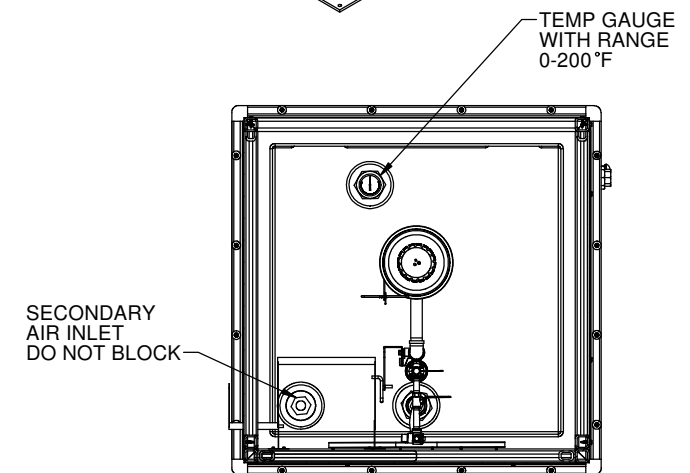
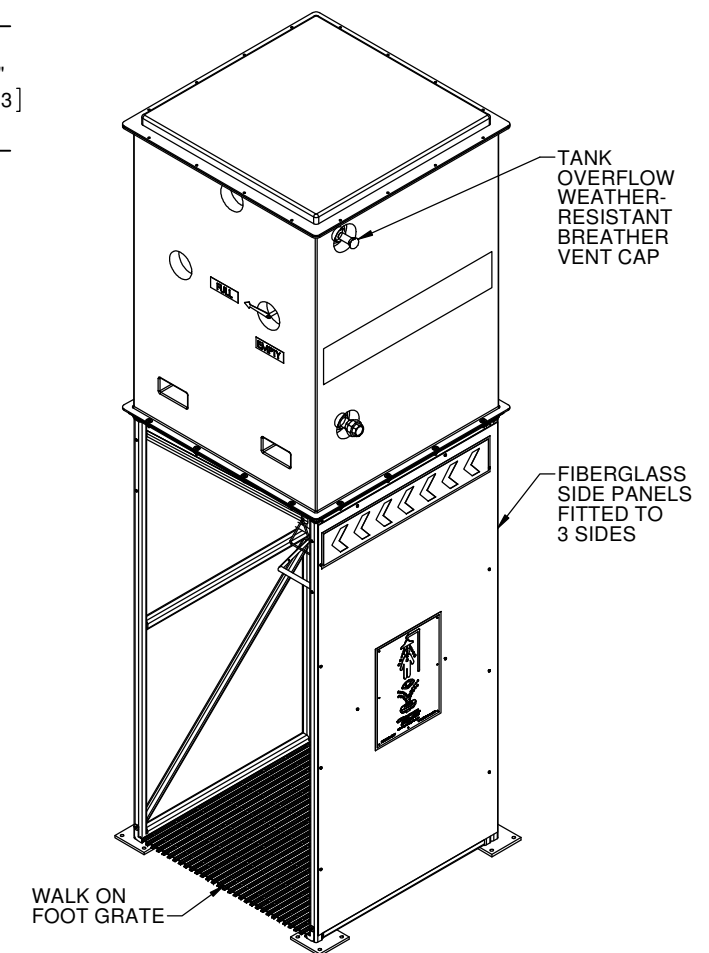
DETAIL C
SCALE 1 : 8



SECTION B-B

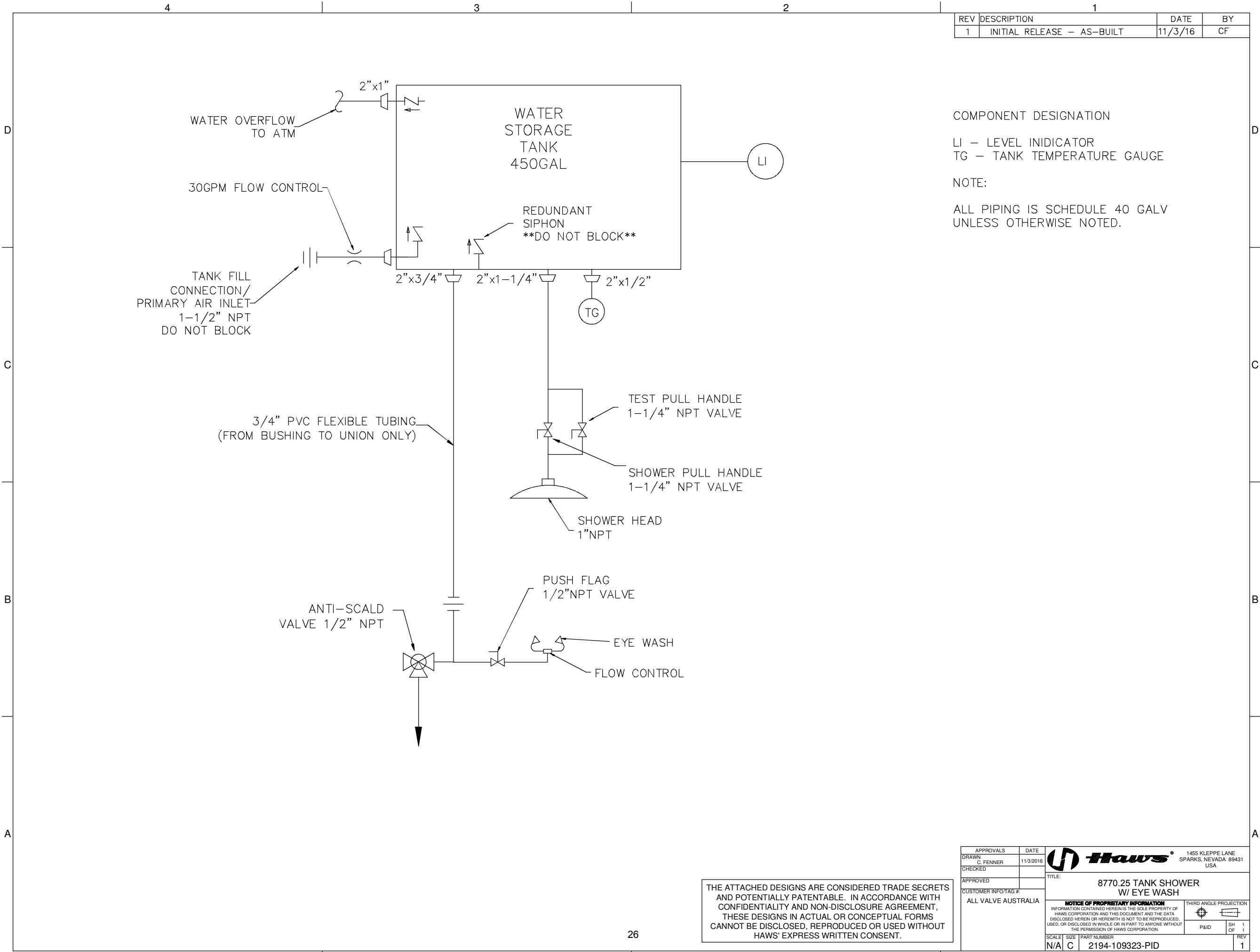


FRONT VIEW





SECTION A-A

BILL OF MATERIAL			
CUSTOMER INFO/TAG #: AUSTRALIA ALL-VALVE		Haws 1455 KLEPPE LANE SPARKS, NEVADA 89431 USA	
JOB NUMBER:	2194-109323	TITLE 8770.25 TANK SHOWER W/ EYE WASH	
DRAWN BY:	OYV	NOTICE OF PROPRIETARY INFORMATION INFORMATION CONTAINED HEREIN IS THE SOLE PROPERTY OF HAWS CORPORATION AND THIS DOCUMENT AND THE DATA DISCLOSED HEREIN OR HEREWITH IS NOT TO BE REPRODUCED, USED, OR DISCLOSED IN WHOLE OR IN PART TO ANYONE WITHOUT THE PERMISSION OF HAWS CORPORATION.	
DRAWN DATE:	09/29/2016	THIRD ANGLE PROJECTION SHOP SH 1 OF 1	
CHECKED BY:		SCALE SIZE PART NO. 1:18 C 2194-109323 GA	
CHECKED DATE:		REV. 1	
APPROVED BY:			
APPROVAL DATE:			



REV	DESCRIPTION	DATE	BY
1	INITIAL RELEASE – AS-BUILT	11/3/16	CF

APPROVALS	DATE	 Haws [®]	1455 KLEPPE LANE SPARKS, NEVADA 89431 USA	
DRAWN C. FENNER	11/3/2016		TITLE: 8770.25 TANK SHOWER W/ EYE WASH	
CHECKED				
APPROVED				
CUSTOMER INFO/TAG #: ALL VALVE AUSTRALIA		NOTICE OF PROPRIETARY INFORMATION INFORMATION CONTAINED HEREIN IS THE SOLE PROPERTY OF HAWS CORPORATION AND THIS DOCUMENT AND THE DATA DISCLOSED HEREIN OR HEREWITH IS NOT TO BE REPRODUCED, USED, OR DISCLOSED IN WHOLE OR IN PART TO ANYONE WITHOUT THE PERMISSION OF HAWS CORPORATION.		THIRD ANGLE PROJECTION 
SCALE	SIZE	PART NUMBER	P&ID	SH OF REV
N/A	C	2194-109323-PID		1 1

THE ATTACHED DESIGNS ARE CONSIDERED TRADE SECRETS AND POTENTIALLY PATENTABLE. IN ACCORDANCE WITH CONFIDENTIALITY AND NON-DISCLOSURE AGREEMENT, THESE DESIGNS IN ACTUAL OR CONCEPTUAL FORMS CANNOT BE DISCLOSED, REPRODUCED OR USED WITHOUT HAWS' EXPRESS WRITTEN CONSENT.

9. WARRANTY

a. Haws Emergency Equipment Limited Warranty

THIS PAGE INTENTIONALLY BLANK
FOR PRINTING PURPOSES

HAWS EMERGENCY EQUIPMENT :: LIMITED WARRANTY



HAWS warrants that this specific product is guaranteed against defective material or poor workmanship for a period of **one year from date of shipment**. HAWS liability under this warranty shall be discharged by furnishing without charge F.O.B. HAWS Factory any goods, or part thereof, which shall appear to the Company upon inspection to be of defective material or not of first class workmanship, provided that claim is made in writing to Haws within a reasonable period after receipt of the product. Where claims for defects are made, the defective part or parts shall be delivered to the Company, prepaid, for inspection. HAWS will not be liable for the cost of repairs, alterations or replacements, or for any expense connected therewith made by the owner or his agents, except upon written authority from HAWS, Sparks, Nevada. HAWS will not be liable for any damages caused by defective materials or poor workmanship, except for replacements, as provided above. Buyer agrees that Haws has made no other warranties either expressed or implied in addition to those above stated, except that of title with respect to any of the products or equipment sold hereunder and that HAWS shall not be liable for general, special, or consequential damages claimed to arise under the contract of sale. The emergency equipment manufactured by HAWS is warranted to function if installation and maintenance instructions provided are adhered to. The units also must be used for the purpose for which they were intended. This product is intended to supplement first-aid treatment. Due to widely varying conditions, Haws cannot guarantee that the use of this emergency equipment will prevent serious injury or the aggravation of existing or prior injuries.

NO OTHER WARRANTIES EXPRESSED OR IMPLIED ARE AUTHORIZED, PROVIDED OR GIVEN BY HAWS.

THIS PAGE INTENTIONALLY BLANK
FOR PRINTING PURPOSES