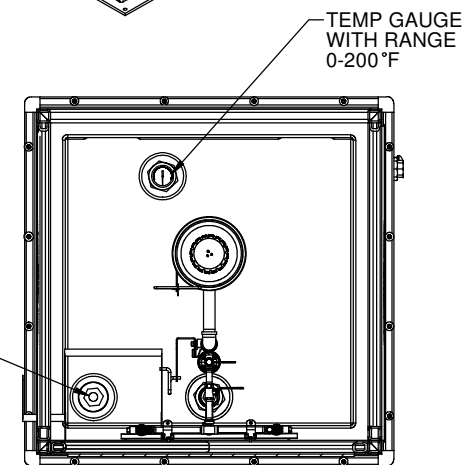
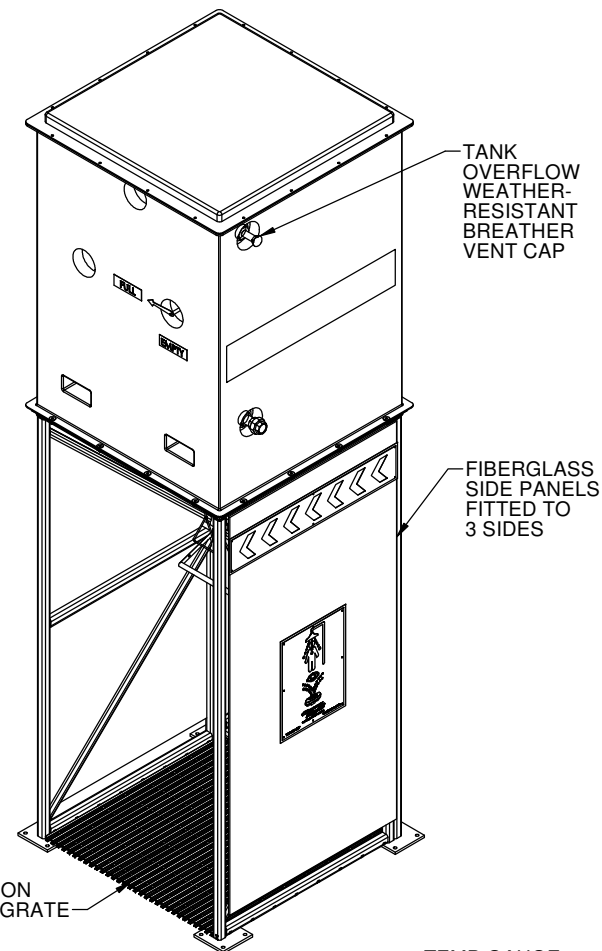
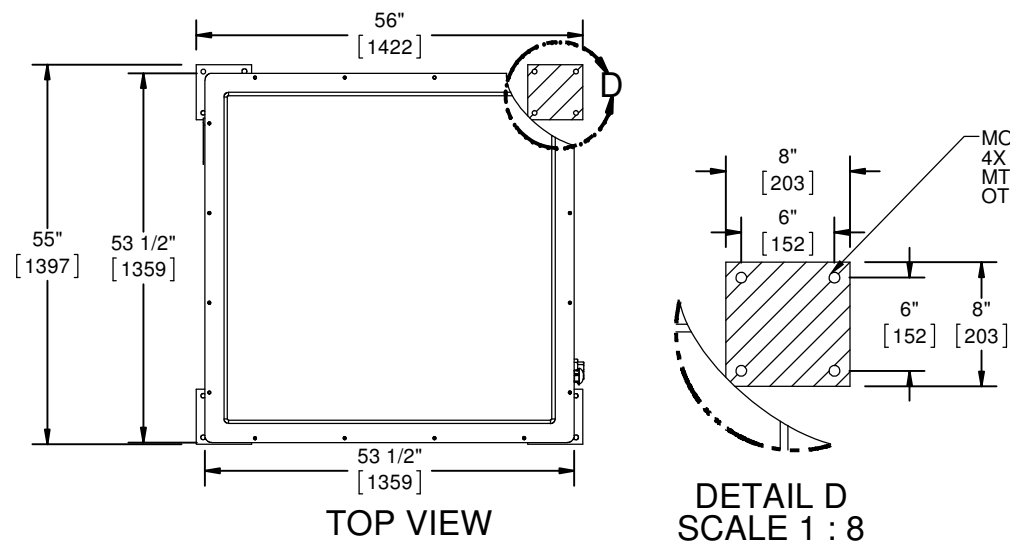
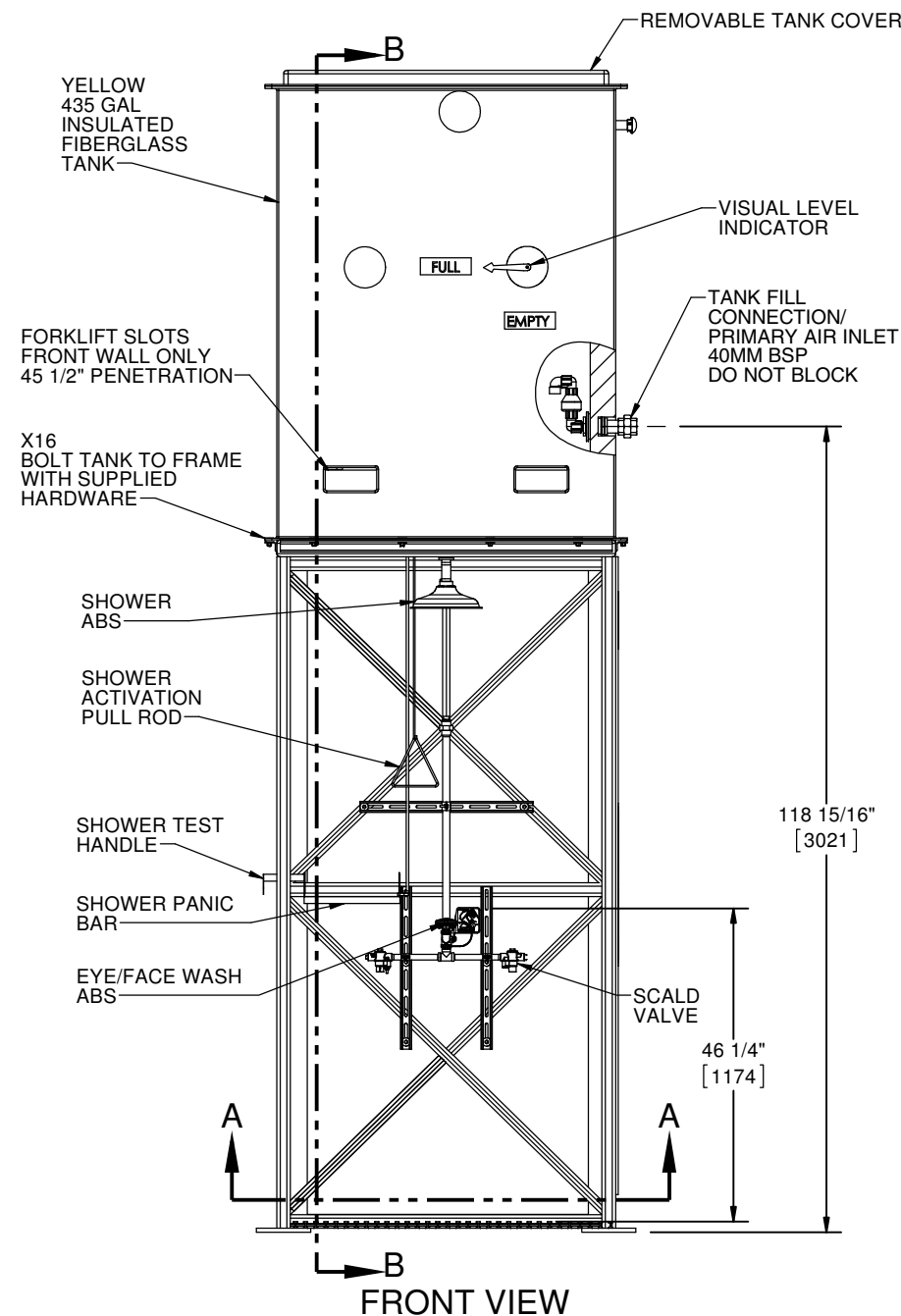
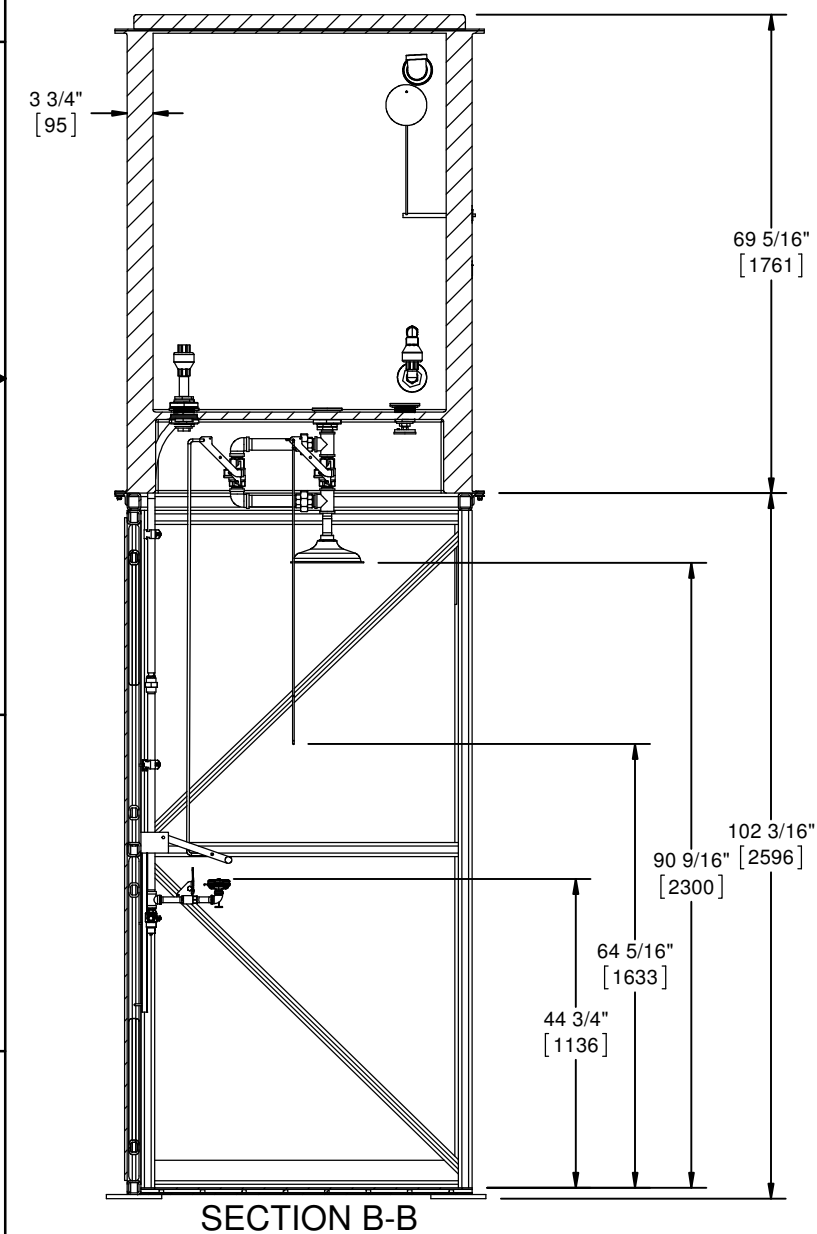


NOTES:

1. DIMENSIONS: INCHES [mm].
2. ALL TOLERANCES: $\pm 1/2"$
3. AREA CLASSIFICATION: NO ELECTRICAL DEVICES INCLUDED. UNIT SUITABLE FOR ALL ELECTRICAL AREA CLASSIFICATIONS
4. MATERIAL:
TANK/PANELS: FIBERGLASS
FRAME: CORROSION PROTECTED STEEL, PAINTED TO RAL 6029 GREEN
PIPE: GALVANIZED STEEL, SCHEDULE 40
FITTINGS: CL150, GALVANIZED STEEL
VALVES: BRONZE
5. ESTIMATED WEIGHT:
DRY: 1552LB [704KG]
WET: 5184LB [2351KG]
6. AMBIENT TEMPERATURE: ABOVE FREEZING, BELOW 100F
7. UNIT COMPLIES TO ANSI Z358.1 -2014.
8. FLOW REGULATION AND CONTROL WITH TANK SIPHON.
9. UNIT SHIPS WITH TANK AND SUPPORT SEPERATE AND DISASSEMBLED. ASSEMBLE WITH PROVIDED HARDWARE AND ANCHOR USING MANUFACTURER PROVIDED MOUNTING POINTS.



SECTION A-A



BILL OF MATERIAL			
CUSTOMER INFO/TAG #: AUSTRALIA ALL-VALVE		 1455 KLEPPE LANE SPARKS, NEVADA 89431 USA	
JOB NUMBER:	2194-109323	TITLE TANK SHOWER WITH EYEWASH	
DRAWN BY:	OYV	NOTICE OF PROPRIETARY INFORMATION INFORMATION CONTAINED HEREIN IS THE SOLE PROPERTY OF HAWS CORPORATION AND THIS DOCUMENT AND THE DATA DISCLOSED HEREIN OR HEREWITH IS NOT TO BE REPRODUCED, USED, OR DISCLOSED IN WHOLE OR IN PART TO ANYONE WITHOUT THE PERMISSION OF HAWS CORPORATION.	
DRAWN DATE:	09/29/2016	THIRD ANGLE PROJECTION <div>  </div>	
CHECKED BY:		SHOP SH 1 OF 1	
CHECKED DATE:		SCALE SIZE PART NO. 8770.25	
APPROVED BY:		REV. 1	
APPROVAL DATE:			